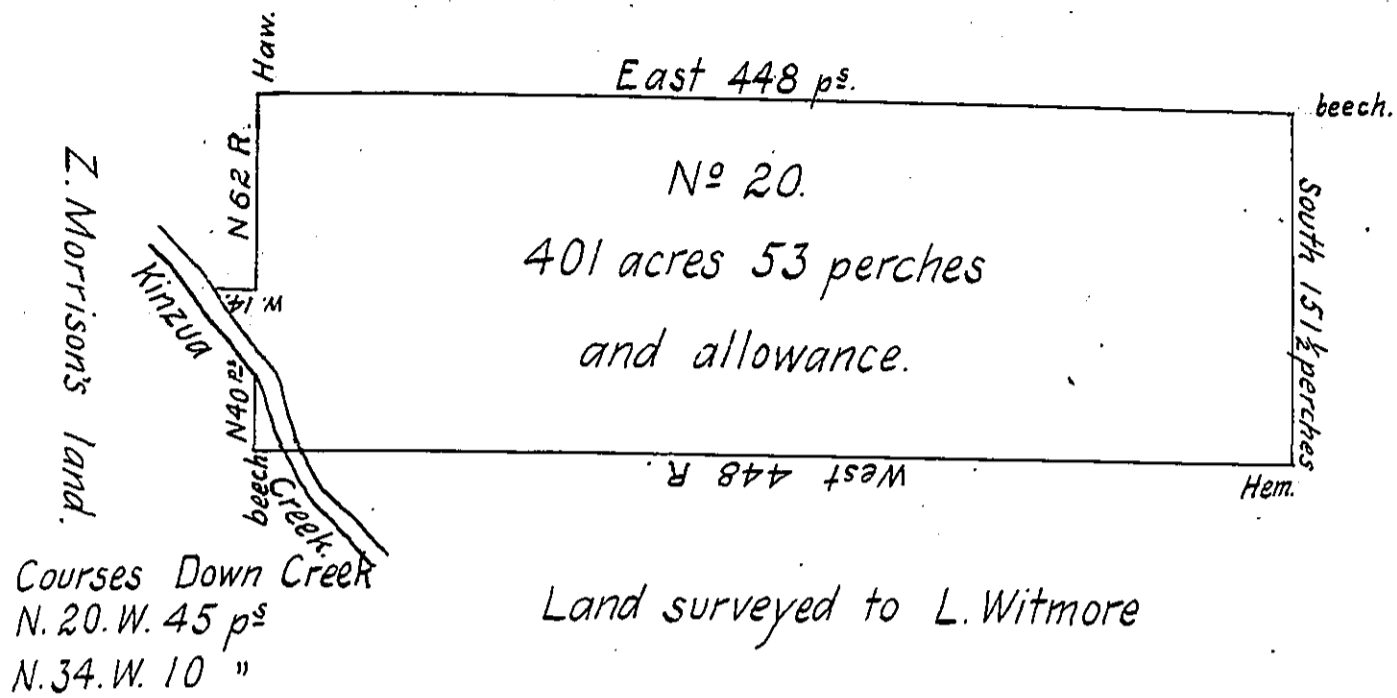


Lands surveyed to L. Witmore



Land surveyed to L. Witmore

By virtue of a warrant granted to Epuphias Root and assigned by Root to Lansing Witmore. dated 8<sup>th</sup> August 1836 and to me directed I have surveyed four hundred and one acres and fifty three perches of land and allowance in Hamilton township Mc Kean County as per above draft surveyed according to law Oct. 9, 1836. the above tract has been improved since April 1832.

To John Taylor Esqr.  
Surveyor Gen<sup>l</sup>

Hiram Payne, Deputy  
Surveyor of Mc Kean County.

IN TESTIMONY that the above is a copy of the original remaining on file in the Department of Internal Affairs of Pennsylvania, made conformably to an Act of Assembly approved the 16th day of February, 1833, I have hereunto set my Hand and caused the Seal of said Department to be affixed at Harrisburg, this twentieth day of August 1906.

*George R. Brown*  
Secretary of Internal Affairs.